

# **Leadership 101**

## **Lesson 1 Cell Ministry**

### **New Life Pentecostal Church**

#### **Introduction**

This is a series of lessons designed to equip the members of New Life Pentecostal Church (NLP) to move into new arenas of Christ-Like leadership in several critical areas of Christian influence.

#### **Prerequisite**

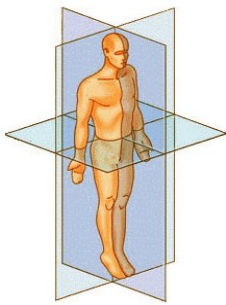
The lesson 'Such as I Have' is a prerequisite to Leadership 101. True leadership in the body of Christ is based upon the servant-hood displayed by Jesus and is the foundation for the teachings in this booklet.

#### **Call to Action**

These lessons are actually a series of 'calls to actions' that will challenge the learner to go beyond just hearing another set of Bible studies. Unless the student commits and executes as a disciple of Christ to the teachings of this booklet, this will probably not be time well spent. These lessons have actionable items that if followed diligently may become habits of servant-hood that will generate a following for the student who would be a leader.

#### **Cell ministry - Lesson 1**

Body growth does not happen on a large scale. Medical science has known for centuries that growth is actually accomplished at the microscopic level in individual cells. A child's hand does not get bigger by growing more fingers, but by growing more cells. Because of their small size, it would be easy to assume that all cells are the same, but this is not true. The growth process of cells and their different purposes provide the illustration for the teachings of this lesson. New Life Pentecostal Church in an attempt to replicate the body growth displayed in the natural process is moving toward a cell creation model for both its outreach and member retention needs.



#### **The smallest reproducible unit**

God does not want individuals to remain alone. Because it was not good for man to be alone, God created Eve for Adam. The family is the smallest reproducible unit in the plan of God. Both those with natural families and those who do not have a natural family need to align themselves with others to become part of a spiritual family of God. In the Bible the household was a critical social unit.

All the saints greet you, but especially those who are of Caesar's household.  
Philippians 4:22

Greet Apelles, approved in Christ. Greet those who are of the household of Aristobulus.  
Romans 16:10

Greet Herodion, my countryman. Greet those who are of the household of Narcissus who are in the Lord. Romans 16:11

I urge you, brethren--you know the household of Stephanas, that they have devoted themselves to the ministry of the saints-- 1 Corinthians 16:14

Yes, I also baptized the household of Stephanas. Besides, I do not know whether I baptized any other. 1 Corinthians 1:16

So the father knew that it was at the same hour in which Jesus said to him, "Your son lives." And he himself believed, and his whole household. John 4:52-54

And when you go into a household, greet it. If the household is worthy, let your peace come upon it. But if it is not worthy, let your peace return to you. Matthew 10:12-13

Who [Peter] will tell you words by which you and your entire household will be saved.  
Acts 11:14

And when she and her household were baptized, she begged us, saying, "If you have judged me to be faithful to the Lord, come to my house and stay." So she persuaded us. Acts 16:15

"Believe on the Lord Jesus Christ, and you will be saved, you and your household."  
Acts 16:31

Now when he had brought them into his house, he set food before them; and he rejoiced, having believed in God with all his household. Acts 16:34

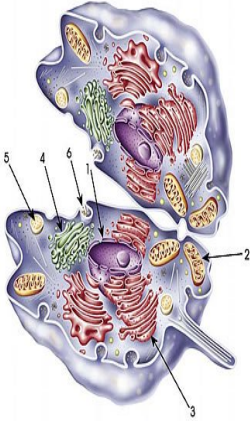
Then Crispus, the ruler of the synagogue, believed on the Lord with all his household. And many of the Corinthians, hearing, believed and were baptized. Acts 18:8

I [Paul] went from household to household with the ministry of the Word..  
Acts 20:20

## **The household is a cell**

Household - Greek: *Oykos*:

*Oykos* is not just your family, but it is your immediate sphere of influence (your group, your friends, your contacts, your co-workers, clerks where you shop, etc). As the household grows so grows the body. It is imperative that the body be healthy at the level of the cells. Cells need food to grow. Healthy cells reproduce and the entire body is blessed through them. New Life Pentecostal Church will work to invigorate and enable the existing God ordained household units to experience the natural growth from the leadership influence each of us have over our personal *Oykos*.



## The types of cells

The different types of cells in a natural body will be model for different types of cells in the fellowship of NLP. Some cells are designed for short term functions and soon die. Other cells endure and multiply through cell division. Both of these types of cells will exist in the NLP model. Short term 'focus group cells' will convene quickly and soon disband after having accomplished their function. Long term cells will continue to exist and will actually multiply into other long term cell or even spin off their own short term focus group cells.

**Focus group cells** will meet for usually 4 weeks around a specific 'hot topic'. These groups will consist of usually two to three NLP families and several other interested attendees. The topics can be as diverse as: KIVA, Archeology, Creation vs Evolution, Raising Children, Cooking Old Testament Food, etc. The topic will no doubt be repeated in other focus groups as the interest is there. Material for these meetings can be standardized and reused, but lack of ready material should not stop these meetings from happening. Focus cells will not meet during regular NLP scheduled meetings and will meet either in a member's home or a neutral location such as a coffee shop. 'Search for Truth' Studies may be included as curriculum for focus groups if new member's to a cell or the church wish to host this type of meeting in their home. Not all 'Search for Truth' Studies will fall under the category of a Focus Cell Meeting.

**Long term cell meetings** will exist for the purpose of maintaining and developing 'body growth centers'. These meetings will have more structure than a focus cell meeting. Today many churches operate a structure in which only the minority do the work of ministering, while the majority sit back and have no real opportunity to play a vital part. Other than turn up to a Sunday morning or evening meeting many of us have little chance to be a disciple or to disciple others. Surely this was not the way it was meant to be? Surely God desires that his church consists of active Christians who are totally involved in the life of the church, where fellowship groups develop real relationships offering support and encouragement and opportunities for the development of spiritual gifts, places where Christians can grow together in ever deepening maturity? The long term cell meeting will require commitment from families in the NLP to open their homes and their hearts on a regular basis. No visitor to NLP should ever go a week without being brought to a long term cell meeting. As these cells grow, they will divide along geographical lines until our assembly is large enough to support 'interest groups' rather than only 'map location groups'. Long term cells groups will provide ministry of word, ministry of fellowship, ministry of compassion and ministry of the table (food). Each participant of a cell meeting will be aware that they are present to give ministry and not just to receive. Cliques that have been formed around long standing friendships must be avoided in cell ministry to avoid any feelings of isolation experienced by any new guests. Cell meetings are designed to enhance the levels of familiarity among its participants; from the new acquaintance engaged in casual conversation all the way to deeper friendships that can both give and receive teachings and advice. It is not the place of the cell meeting to instruct on matters of standards of holiness; that is the domain of the pastor.